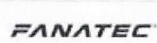






STARTING CEREMONY

CROWDSTRIKE 24 Hours of SPA



Dress Uniform



Drivers and Mechanics must wear their racing suits with all mandatory patches



Starting Procedure



15:30

VIP Grid Walk Open

15:40

Pit Lane Open

One Lap – straight to grid. No installation laps possible. Any car returning to the pits will start from the pit lane.

15:50

Pit Lane Closed



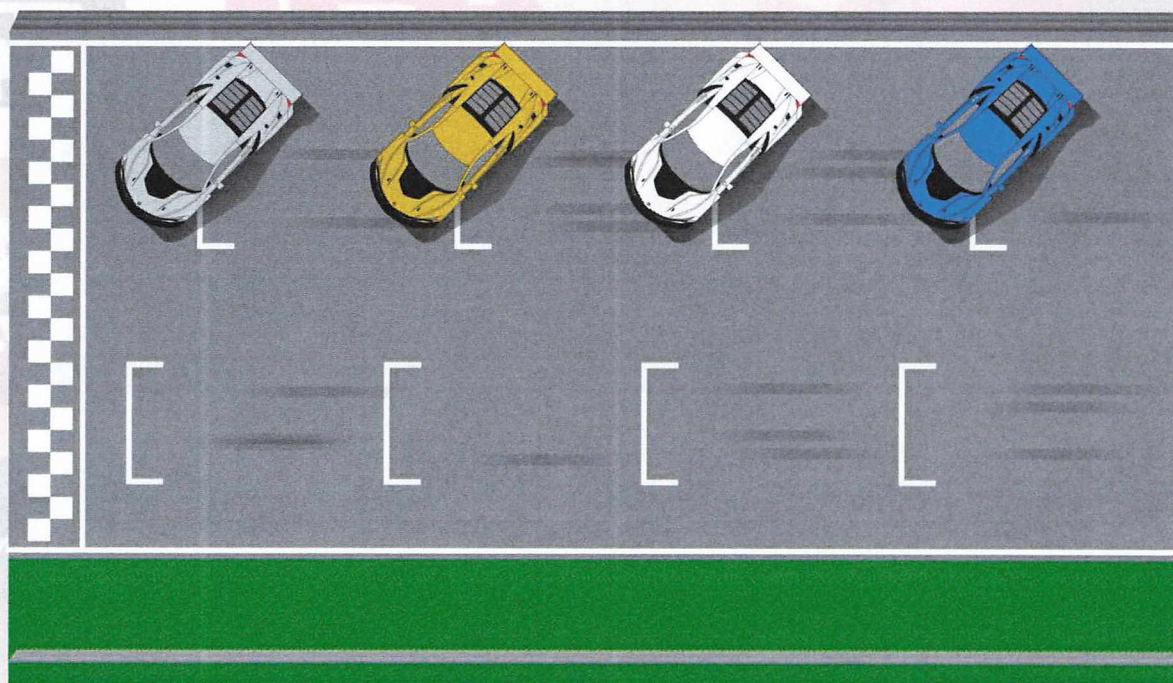
Cars Positioning

15:55

All Cars Parked at 45 Degrees
rear close to the pit wall
check your position with your car number
on the pit wall



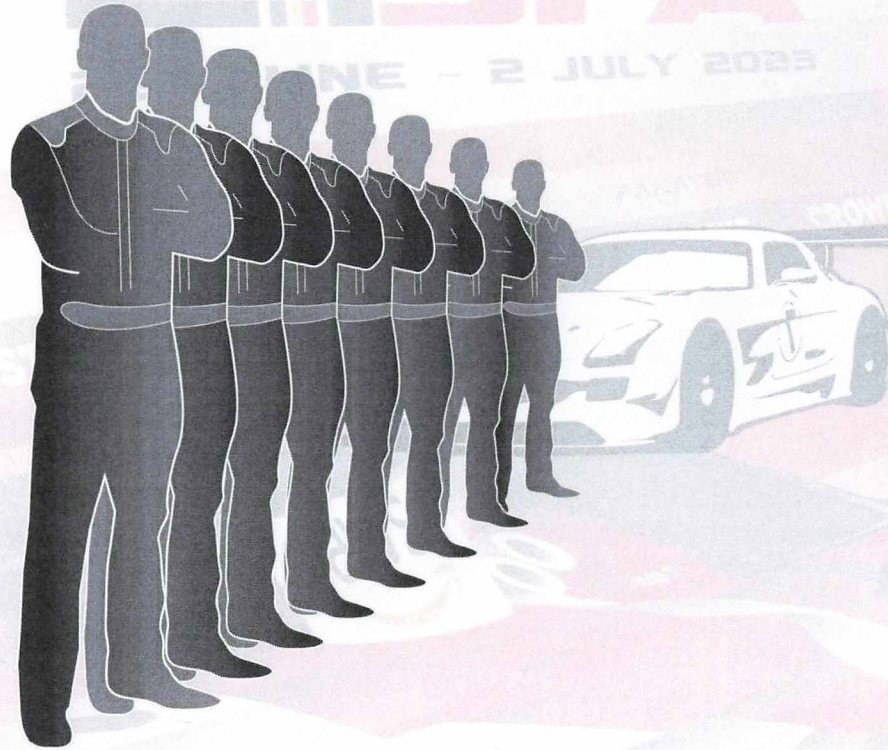
Car Positioning



Use of skates is allowed to manoeuvre the cars



Crew Positioning



16:00

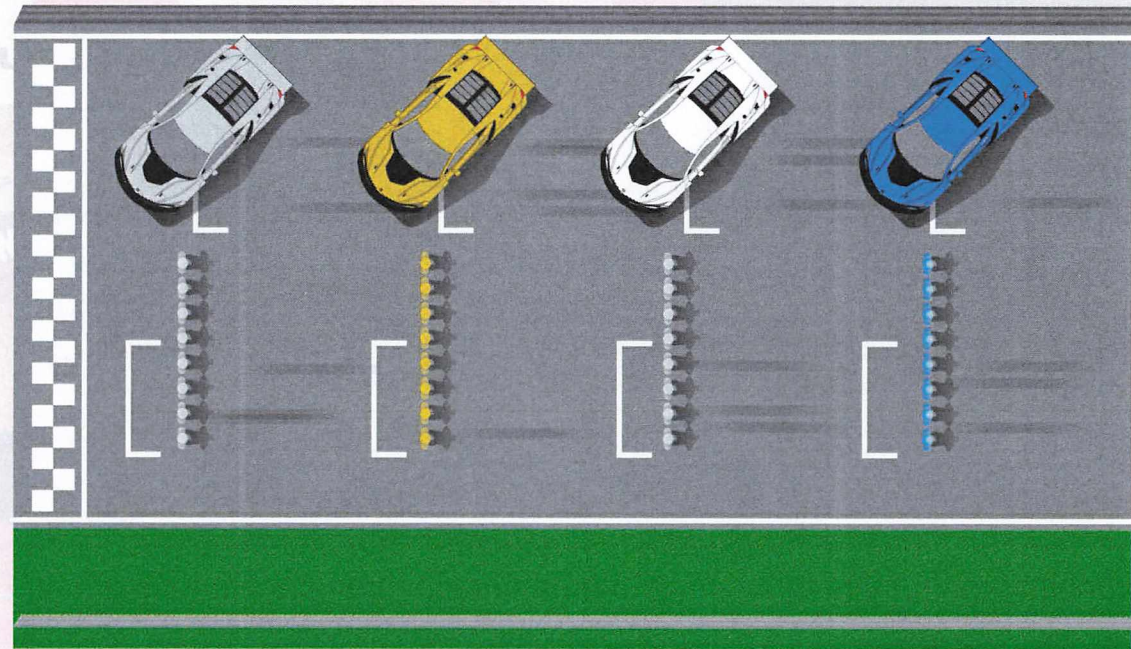
Drivers & Crew Start Alignment
VIP and guests will be placed on the grass opposite to the cars.



Crew Positioning



16:05
Drivers & Crew In
Position
Belgian National
Anthem



Grid Evacuation

16:07

VIP Grid Walk
Evacuation divided in
groups

Beginning of
Evacuation of
Team Trolleys

Exit will be via the gate
indicated



Countdown



16:15

10 min Board

16:20

5 min Board (tyres must be fitted on the car)

16:22

3 min Board (all team trolleys must be evacuated)

16:24

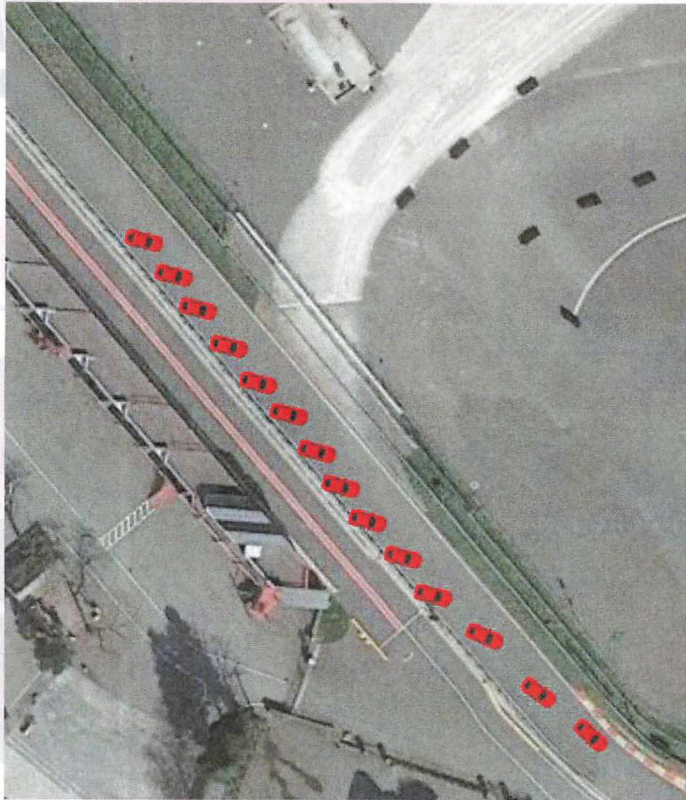
1 min Board (start your engine)

16:25

Green Flag



Cars Evacuation



Cars will leave the grid one by one with no delay. Drivers must follow the speed set by the lead car to build up the tyre pressure and to warm up the brakes



CROWDSTRIKE

24h FIA

29 JUNE - 2 JULY 2023



Thank you
Have a Wonderful Race!

